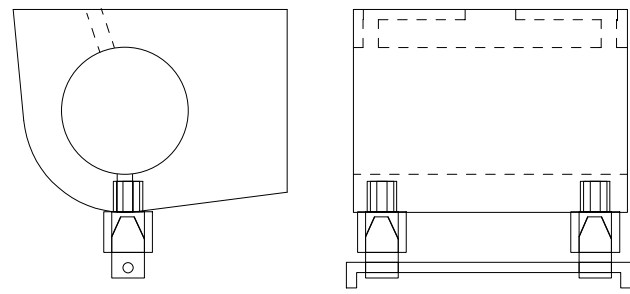
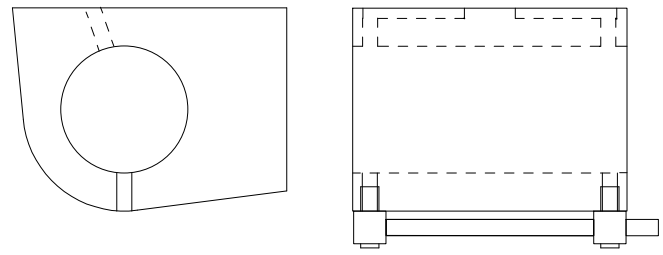


Type 1. Martin Sheridan.

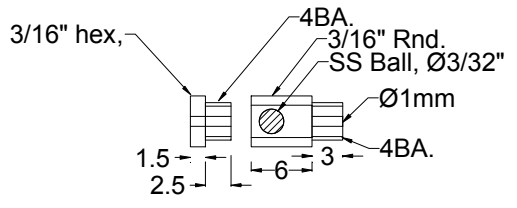
Type 3 - Gordon Watson



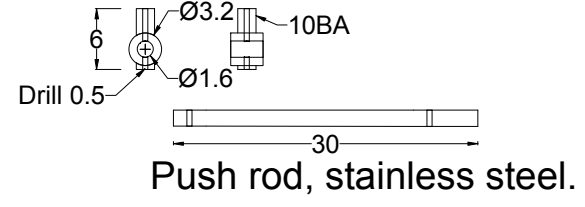
Type 2. David Bailey



Type 4. DJB Engineering.



Drain Cocks brass



I made straight ones for the front of the Ruby cylinders, all you need is a 3/32" dia SS ball in an 1/8" chamber with the rear screwed into the steamchest, the front of the chamber has a plug screwed in with a 1/16" dia hole in it, seat the ball on the hole and make the chamber long enough so that the ball can sit in the bottom of it, mine are about 3/16" long inside, the water will pass the ball until the steam pressure pushes it onto the seat.